



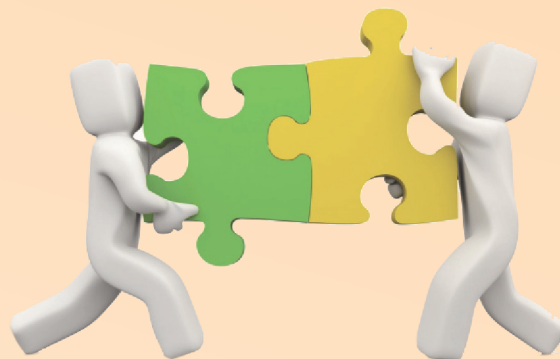
## COMPETITION AND FAIR TRADING COMMISSION

Just Competition,  
Fair Trading

Bungwe lowonetsetsa kuti mpikisano wa malonda ukuchita mwachilungamo la CFTC lidakhazikitsidwa motsata lamulo lowona za Mpikisano ndi chilungamo pa malonda. Cholinga cha lamuloli ndikuwonetsetsa kuti Malonda akuchitika mopindulira chuma cha dziko, ogula komanso a Malawi onse.

Ntchito ya bungweli ndi kuyang'anira, kuwunika, kuletsa ndi kupewa mchitidwe wina uliwonse omwe ungathe kusokoneza mchitidwe wa mpikisano wa chilungamo pa malonda. Zolinga zikuluzikulu za lamuloli ndi kulimbikitsa mpikisano pa malonda; kulimbikitsa dongosolo la bwino; komanso kuteteza ogula kumbali ya chuma.

### Kuphatikizana kwa Makampani a Malonda



Kuphatikizana kwa Makampani pa Malonda kumakhudza kwambiri malonda komanso ogula kumbali ya chuma. Kuphatikizanakumachepetsa mpikisano komanso kumabweretsa kusakhazikika kwa mitengo ya malonda. Ochita malonda akuyenera kupempha chilolezo ku bungwe la CFTC asanalowe mu mgwirizano wa kuphatikizana kwawo. Ngati alibe chilolezo cha bungweli, ndiye

kuti m'gwirizano wawo ndi osavomerezeka.

### Kodi zina ndi ziti zomwe zimatsutsana ndi mpikisano pa malonda?

Lamuloli limaletsa migwirizano ndi ziganizo zomwe zingasokoneze, kuletsa kapenanso kutsamwitsa dongosolo la mpikisano wabwino wokomela anthu onse m'Malawi munjira ina ili yonse. Zitsanzo za kachitidwe koletsa mpikisano pa malonda ndi monga izi:

- Tsankho
- Kulowa pa m'gwirizano womwe mfundo zake ndizopanda chilungamo
- Kugulitsa katundu mophatikizana
- Osalola ena kuti azigulitsa nawo katundu
- Kukhazikitsa mtengo umodzi pakati pa opikisana pa malonda
- Chinyengo ndi kubera pofuna kupeza mwayi wopereker katundu
- Migwirizano yogawana misika ndi ogula
- Kumemezana pofuna m'gwirizano
- Kugawana ka katundu pa msika
- Kukanisitsa kugulitsa malonda kwa anthu ena ofunisitsa kugula.
- Kugwirizana kukaniza ena kulowa mu m'gwirizano
- Kugwiritsa ntchito mphamvu zawo pa msika popondereza ena.



## Mchitidwe wopanda chilungamo kwa ogula malonda



Mchitidwe wa malonda opanda chilungamo ndi omwe umabweretsa zipsinjo zochuluka kwa ogula. Machitidwe wopanda chilungamo kwa wogula ndi monga awa:

- Kubisa kapena kuwononga katundu ndi cholinga chofuna kukweza mitengo yakatunduyo;
- Kukana kuchitapo kanthu pa katundu yemwe wapezeka ndi vuto kapena kuwonetsa mawu okana kubweza katundu pomwe mwagula;
- Kuyikapo katundu osiyana ndi yemwe amatsatsidwa;
- Kuchita zinthu mosokeneza dala;
- Kugulitsa katundu wowonongeka kapena owopsa kwa anthu;
- Kuyika mfundo zosavomerezeka ndi zopanda chilungamo pa malonda.
- Kuchita malonda omwe phindu lochuluka likupita kwa munthu m'modzi ena akuvutika;
- Kuchita malonda omwe ali ndi nyambo;
- Kulonjeza kuereka mphototho koma wosafumna kupereka mphototho
- Kutsatsa malonda monama

## Kodi ndi ngachite chiyani pomwe ndakhudzidwa ndi kachitidwe ka malonda kosokoneza mpikisano komanso kopanda chilungamo?

- Ogula kapena ogulitsa aliyense ali ndi ufulu okadandaula ku CFTC zokhudza m'chitidwe uli wonse wopanda chilungamo.
- Bungwe la CFTC lidzawunika mokwanira kuti litsimikize ngati lamulo **lowona chilungamo pa malonda** laphwanyidwa.
- Potengera zotsatira za kauniuni, bungweli lidzachotsa dandauloli kapena lidzapereka dandauloli ku mabungwe ena okhudzidwa.
- Bungweli lidzathandiza ogula kuti abwezeredwe ndalama zawo kapena kusintha katundu.

## Zilango

Wophwanya lamulo adzapereka chindapusa chokwana K500, 000 kapena ndalama yofanana ndi phindu lomwe lapangidwa pochita cholakwikacho, kapenanso kumangidwa kwa zaka zisanu ngati mulanduwo ndi waukulu.



**HEAD OFFICE**  
Executive Director  
Competition and Fair Trading Commission  
New Golden Peacock Office Complex  
Off Presidential Way 6th Floor  
Private Bag 332  
City Centre  
Lilongwe



Tel: +265 310 001 440  
+265 310 001 441

**REGIONAL OFFICE**  
Government Building  
3rd Floor, Right Wing  
Adjacent to Ministry of Industry,  
Trade and Tourism Offices  
Blantyre



Tel: +265 880 725 075



competitioncommission@cftc.mw  
consumer@cftc.mw



www.cftc.mw



Competition and Fair Trading  
Commission of Malawi



cftcmalawi